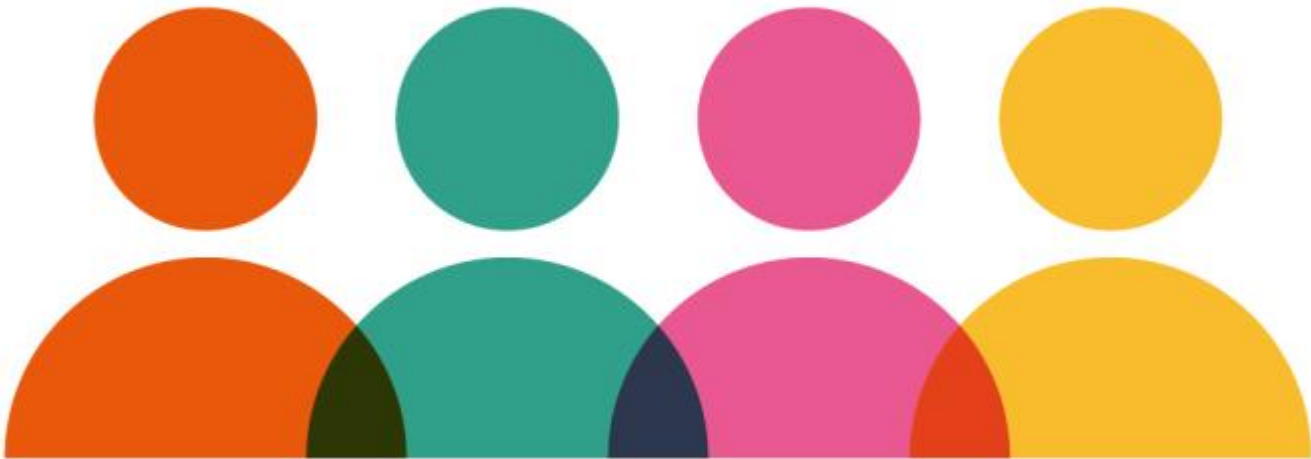


Age Assessments and Age Disputes

Image



Policy and Guidance

This section provides information on policy and guidance on age assessments and age disputes.

- Home Office provides policy guidance on age assessments (recent version released November 2024). You can also refer to Association of Directors of Children's Service (ADCS) guidance which informs on how to undertake high quality age assessment.
- Home Office sets out guidance on the procedures to follow when the age of an immigration detainee is disputed. (recent version released March 2023)

Resources

You can find different resources on age assessments and age disputes here.

- BASW have written a new best practice guide for social workers undertaking age assessments. [You can download it here.](#)
- ISWS have designed a useful free guide & resource pack for those undertaking age assessments. [You can download it here.](#)
- ADCS provides [age assessment information sharing proforma](#) which is useful for professional conducting age assessment.
- CORAM Children's legal centre provides a [useful factsheet on age assessment.](#)
- Greater Manchester Immigration Aid Unit provides [young people's guide to the age assessment process.](#)
- [Children's Society Refugee Toolkit](#) offers resources that informs the needs, rights and entitlements of young refugees and asylum seekers. Right to Remain also provides a [useful toolkit to explain the stages of a young person's asylum journey.](#)
- Migration Yorkshire provides [a list of available solicitors to support the young people with their asylum claim](#)

Training

We offer a range of training where we discuss age assessments and age disputes. Please check our [Events & Training page](#) for updated training courses. If you would like to commission us to deliver our 'Welcoming & Supporting Young Refugees training' please contact us on: wyr@migrationyorkshire.org.uk

Contact for UASC hub

Your contact for Yorkshire and Humber is:

Delphine Jacobs - UASC Regional Coordinator
wyr@migrationyorkshire.org.uk
0113 535 0119