

歡迎/WELCOME

HONG KONG BNO DROP-IN SESSION

ACCESS TO HEALTH



Migration Yorkshire



Department for Levelling Up,
Housing & Communities



Rules for today

- We are recording this event, but we will only record the presentation part
- Participants (audience members) and Q&A session will not be recorded
- Cantonese interpreter is available
- Camera can be on/off, but please keep microphones off when not speaking
- In-meeting chat is open for your messages in either Cantonese or English
- Please don't take photos or screenshots
- PowerPoint slides and recording will be available on our Hong Kong Hub (please allow a week) but can also be requested from admin@migrationyorkshire.org.uk



What will we cover today?

Health system in the UK

- Rules on accessing the National Health System (NHS) (including interpreters)
- How to register with a General Practitioner (GP)
- Accessing secondary care (specialists)
- Mental health (MH) services
- Emergency treatment
- Dental care on NHS
- Opticians on NHS
- Maternity care
- Covid vaccines



Access to the NHS (England)

Who can access NHS free of charge?

- Some types of healthcare are [free to everyone](#) and can be accessed by a person regardless of their immigration status (GP, emergency help, NHS 111 telephone advice, Covid, service by health visitors and school nurses)
- Some types of healthcare (mainly in a [hospital settings](#)) are free only for [migrants](#) with valid immigration leave, such as BNO visa, but not LOTR or visitor visa
- If you don't have valid leave and your treatment is deemed necessary, NHS will provide it and send a bill; if not urgent, you will be asked to pay upfront
- There are some exemptions – such as asylum seekers*, victims of modern slavery



Access to the NHS (England)

Does the NHS provide interpreters?

- Yes, it does but; the [guidance](#) says:
- "Patients should be able to access primary care services in a way that ensures their language and communication requirements do not prevent them receiving the same quality of healthcare as others"
- "On registration with a primary care service (or subsequently if their needs change), patients requiring language support should be made aware of the different types of interpreting available to them (e.g. face-to-face, telephone, video remote interpreting / video relay services)"



How to register with a GP?

Registering with a GP

- you are expected to register with your local GP [Find a GP - NHS \(www.nhs.uk\)](https://www.nhs.uk)
- You don't need proof of address or immigration status, but you might be asked to provide it
- A GP surgery can refuse to register you because they are not taking any new patients, or you live outside the practice boundary and they are not accepting patients from out of their area
- Do mention your past medical history, ongoing treatment and language needs
- You will be assigned an [NHS number](#) - a 10 digit number, like 485 777 3456; You'll get a letter in the post and your NHS number will be shown in the letter.
- Online services [NHS online services - NHS \(www.nhs.uk\)](https://www.nhs.uk)

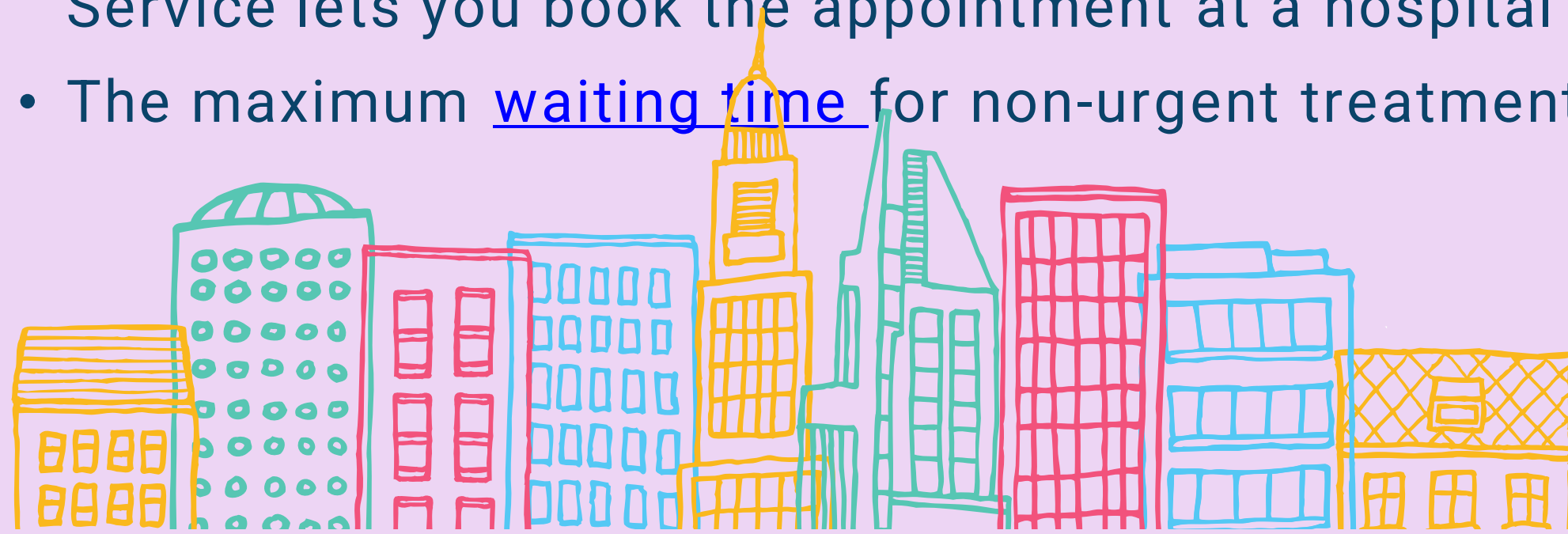
Accessing secondary care

What is secondary care?

- Secondary care is more [specialised care](#), provided mainly in hospital settings
- You need a [referral from your GP](#) to access it (or be referred from A&E)

Transferring ongoing treatment from HK to UK

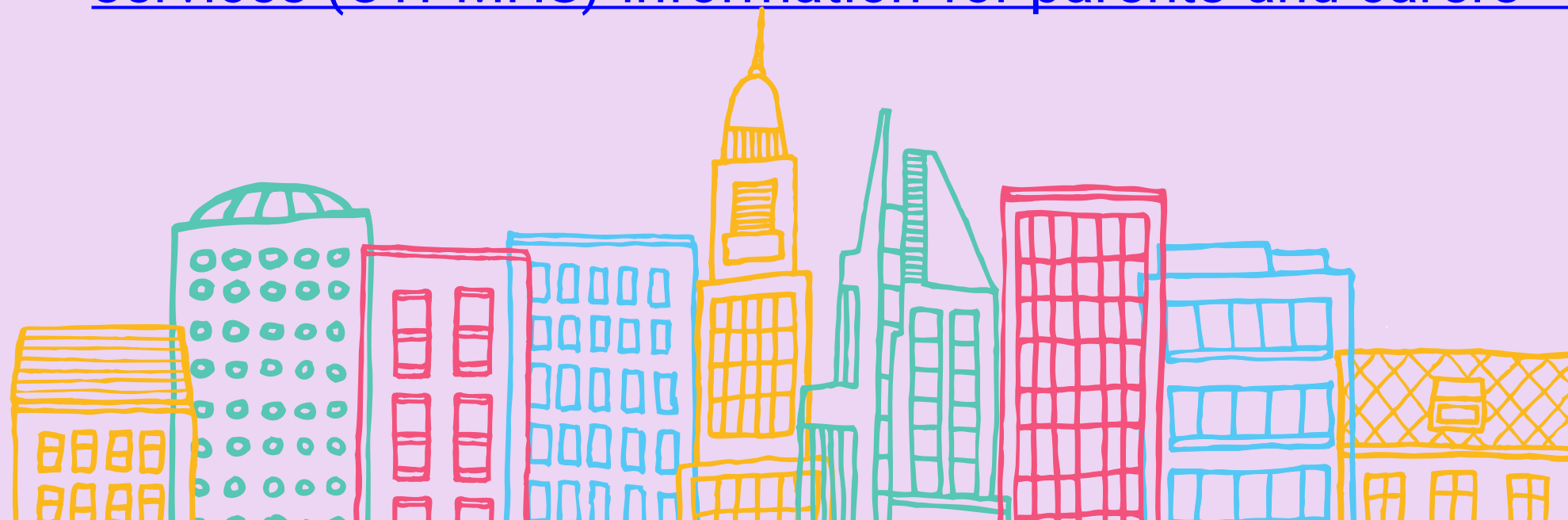
- GP does initial tests and follow the process for referrals to specialists
- They might and might not accept your medical paperwork from HK
- [When you're referred](#) for your first outpatient appointment, the NHS e-Referral Service lets you book the appointment at a hospital or clinic of your choice
- The maximum [waiting time](#) for non-urgent treatments is 18 weeks



Mental health (MH) services

Accessing MH services

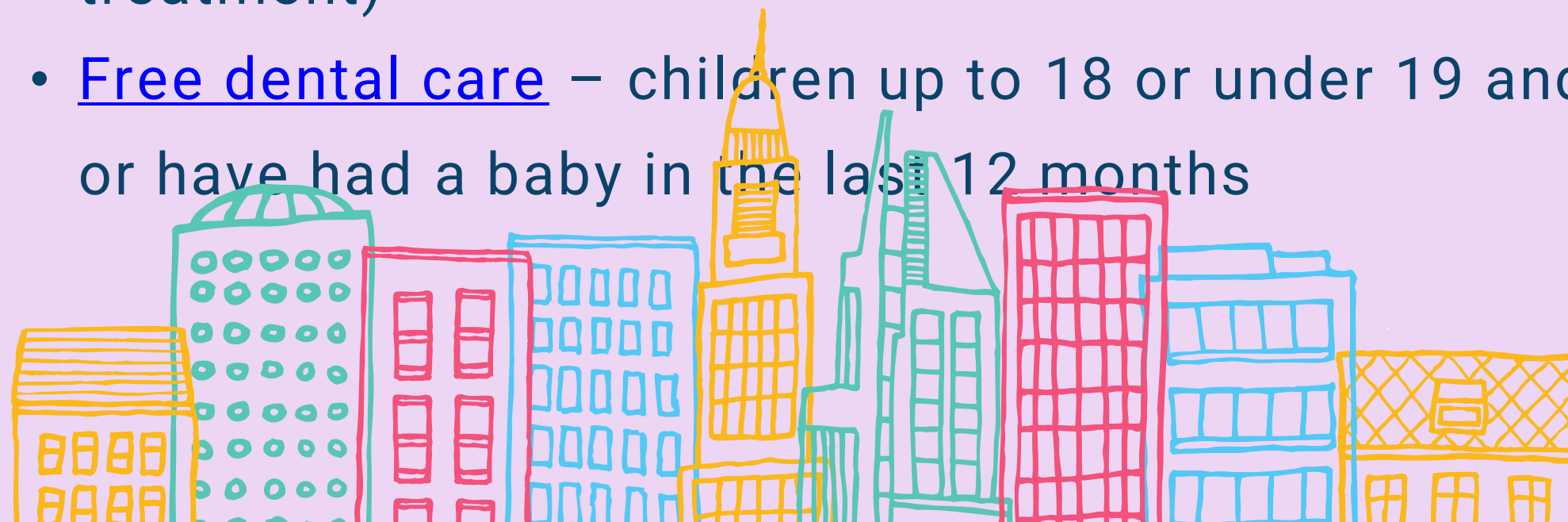
- Mental health services are free on the NHS, but in some cases you'll need a [referral from your GP](#) to access them
- [Find Mental health support services - NHS \(www.nhs.uk\)](http://www.nhs.uk)
- You can [get help from a mental health charity - NHS \(www.nhs.uk\)](http://www.nhs.uk)
- Local well-being services
- Help for children and young people [Children and young people's mental health services \(CYPMHS\) information for parents and carers - NHS \(www.nhs.uk\)](http://www.nhs.uk)



Dental care on NHS

Dental care

- You can register at any dental practice; you are not bound to a catchment area; find an NHS dentist via [Find a dentist - NHS \(www.nhs.uk\)](https://www.nhs.uk)
- If unable to find a dentist, call NHS England's Customer Contact Centre on 0300 311 2233
- Dental care isn't universally free – costs of treatment [Understanding NHS dental charges - NHS \(www.nhs.uk\)](https://www.nhs.uk) (sometimes NHS treatment is more expensive than private treatment)
- [Free dental care](https://www.nhs.uk) – children up to 18 or under 19 and in full-time education; pregnant or have had a baby in the last 12 months



Opticians on NHS

Opticians

- You can register at any optician; you are not bound to a catchment area; find an optician via [Find an optician - NHS \(www.nhs.uk\)](https://www.nhs.uk)
- You have to pay for eye tests and glass, unless you are [exempt](#)

Free eye tests

- You are under 16; are 16, 17 or 18 and in full-time education; are 60 or over; are registered as partially sighted or blind; have been diagnosed with diabetes or glaucoma

NHS optical vouchers

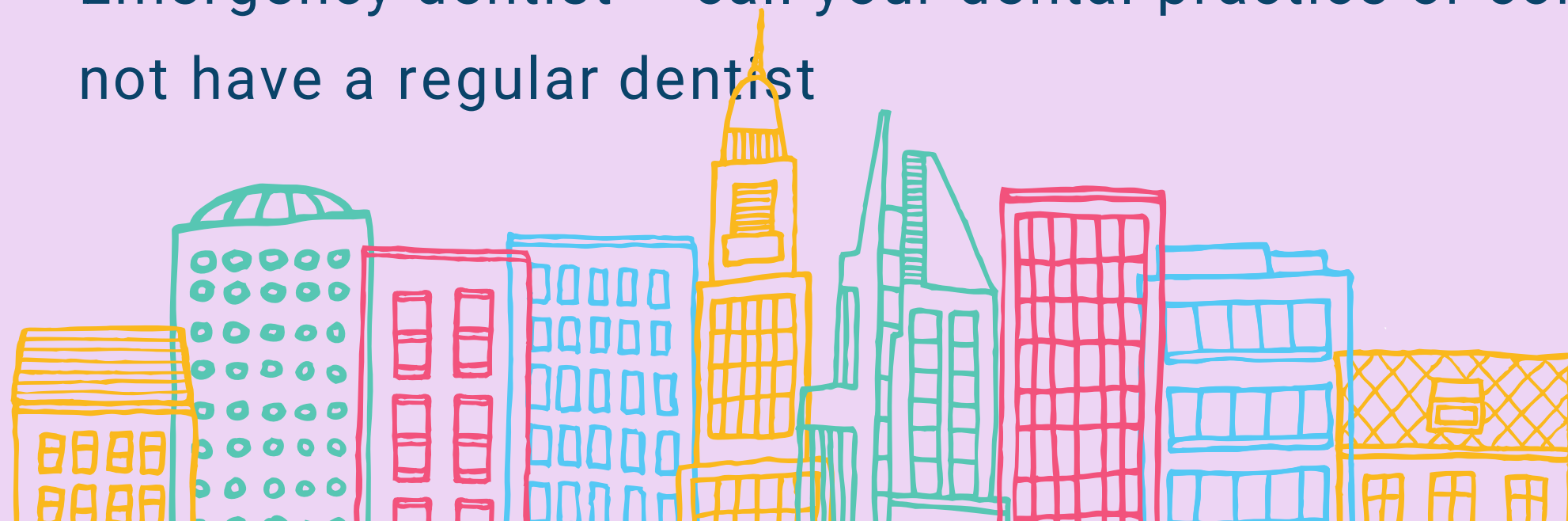
- You are under 16; are 16, 17 or 18 and in full-time education;



Emergency treatment

What to do in emergencies?

- Life-threatening emergencies – call 999 for an ambulance or get to Accident and Emergency (A&E) [Find your nearest A&E](#)
- Urgent medical attention needed, but it's not a life-threatening situation – go to Urgent Treatment Centre (Minor Injury Units or walk-in centres) [Find Minor injuries unit services - NHS \(www.nhs.uk\)](#)
- Not sure what to do – call [NHS 111](#)
- Emergency dentist – call your dental practice or contact [NHS 111](#), if you do not have a regular dentist



Maternity care

How does antenatal care look like in the UK?

- Led by a midwife (after referral from a GP)
- 2 [pregnancy ultrasound scans](#) at 8 to 14 weeks and 18 to 21 weeks
- [antenatal screening tests](#) to find out the chance of your baby having certain conditions, such as Down's syndrome
- [blood tests to check for syphilis, HIV and hepatitis B](#)
- [screening for sickle cell and thalassaemia](#)
- You may also be offered [antenatal classes](#), including breastfeeding workshops
- Follow-up care by health visitors



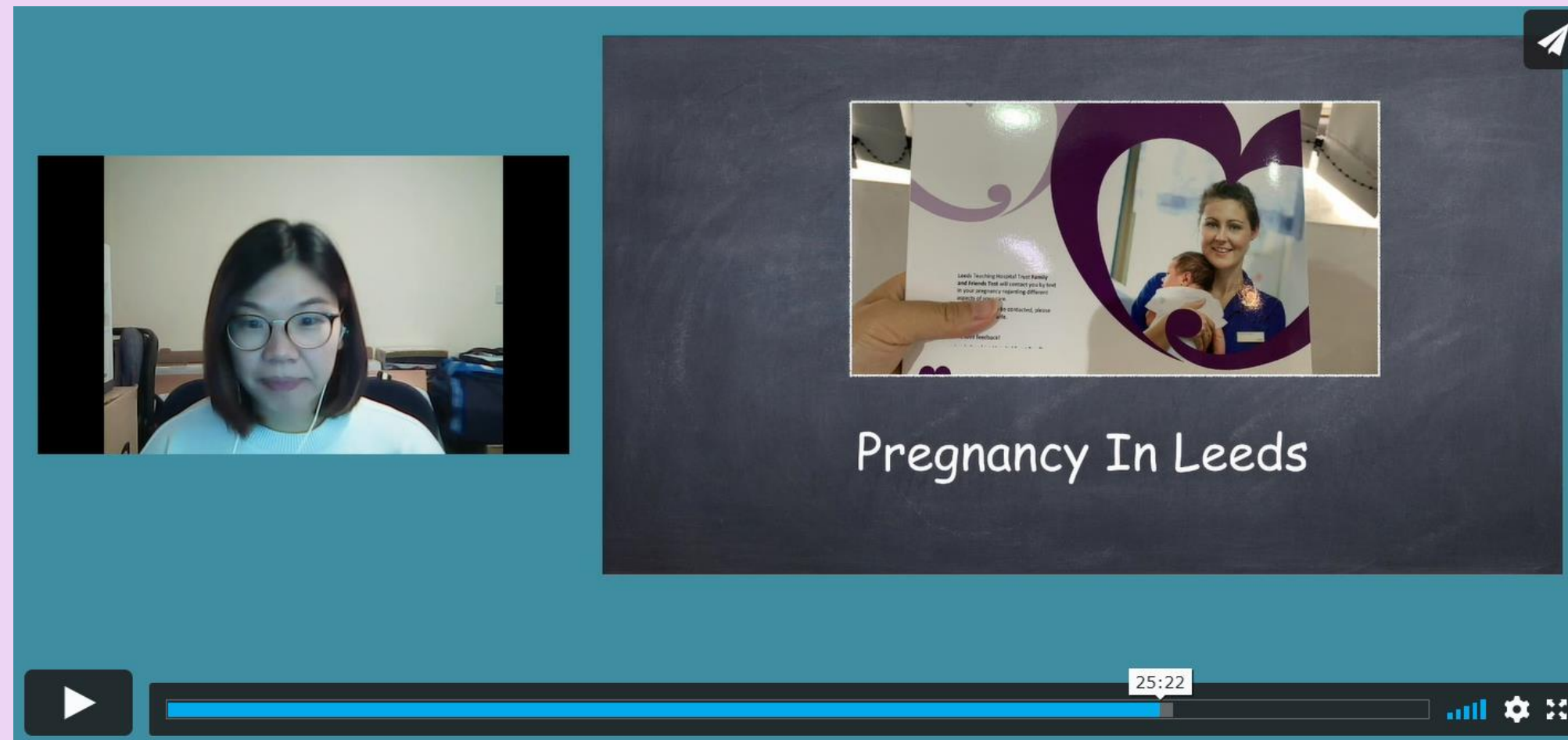
Covid-19 vaccines

Covid-19 vaccines for new arrivals

- Individuals do not require an NHS number or GP registration to receive the COVID-19 vaccines
- NHS has the guidance on the eligibility for various doses based on foreign vaccination history
- However, there has not been a consistent experience for individuals seeking to complete their immunisations or get them recorded
- NHS are currently working on standing up three vaccination centres (Sheffield, Leeds and Newcastle) that will have dedicated services for overseas vaccinations, including recording for medical records; going live on 2 December



Experiences of accessing the NHS in Yorkshire & Humber





Migration Yorkshire

多謝你花時間畀我哋/Thank you!

