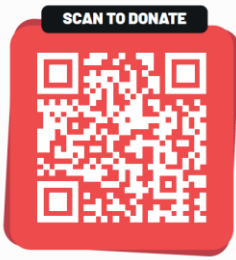


Hate Awareness and Stop Hate UK services



STOP HATE. START HERE

Hate Awareness and Stop Hate UK services

Michael Hatfield | On Your Side Partnerships and Contract Manager

Tasha Dawson | Training and Community Engagement Project Worker & Helpline Operator

October 2022



Content



- Stop Hate UK services
- What is meant by hate and discrimination
- How hate can be reported
- Next step processes within Stop Hate UK and On Your Side services
- The difference between third party and statutory reporting

Stop Hate UK Vision and Mission



Stop Hate UK is a leading anti-hate and discrimination charity and has been supporting people and challenging hate since 1995.

Our Vision

A world which is free from hate, harassment, and discrimination.

Our Mission

To combat Hate,

To support those affected,

To educate towards a hate free world.



Our patron is Baroness Doreen Lawrence of Clarendon OBE, of Clarendon in the Commonwealth Realm of Jamaica.

What we do – Stop Hate UK services



Advocacy, Support and Reporting



Education, Development and Training



Awareness Raising



Online and Offline Hate

"whatever they call you
call us"
®

STOP HATE UK
0800 138 1625
24 HOUR HELP LINE

STOP HATE UK
STOP HATE. START HERE

Defining a Hate Crime



Hate Crimes are any incidents that breach criminal legislation where the victim or any other person perceives it to be motivated by hostility or prejudice towards someone based on identity.

- **Disability**
- **Faith**
- **Race**
- **Sexual orientation**
- **Transgender Identity**

Stop Hate UK support people affected by any hate targeted towards a persons identity. Which includes:

- **Alternative Subculture**
- **Age**
- **Gender Based Hate/Misogyny**

What is a Hate Incident

SCAN TO DONATE



Hate Incidents are perceived to be motivated by hostility or prejudice but in isolation do not breach criminal legislation.

These examples could be crimes if taken place in a public space but in a private space, may not breach criminal legislation.

- **Verbal abuse**
- **Threatening behaviour**
- **Throwing rubbish into a garden**
- **Malicious complaints**



Defining discrimination

SCAN TO DONATE



Treating a person unfairly because of who they are or because they possess certain characteristics.

Direct - verbal abuse, physical assault

Indirect - labels, jokes, banter, attitudes

Institutional (Systemic) – embedded as 'normal practice'



Making a report – how to report hate

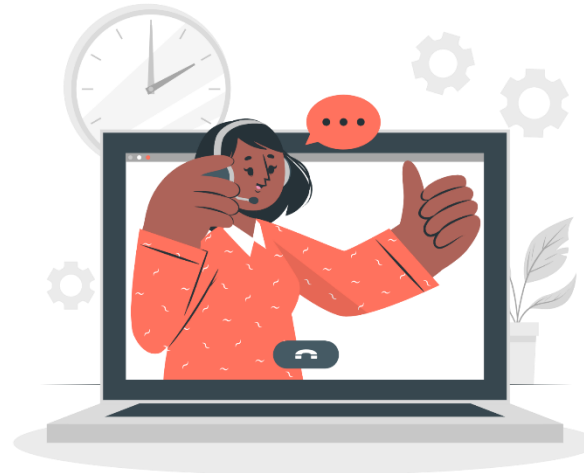


What happens after I make contact?



Our Helpline Team responds to immediate needs, assesses situation and records details using vital listening and emotional support skills.

Members of our Support Team assess the information and decide on appropriate next steps.



If our caller has given consent to share:
Referral is made by secure email to relevant referral points



If our caller has not given consent:
Anonymous referral is made to relevant referral point for intelligence purposes

How to report to Stop Hate UK



Phone: 0800 138 1625

Text: 07717 989 025

Text Relay: 18001 0113 293 5100

BSL: via www.stophateuk.org

Email: talk@stophateuk.org

Chat: www.stophateuk.org/talk

Online: www.stophateuk.org/tell

**IF NOT YOU,
WHO?**



On Your Side

SCAN TO DONATE



on your side



What is On Your Side? →

On Your Side is a UK-wide support and reporting service for East and Southeast Asian communities who experience racism and/or any forms of hate.

On Your Side includes a 24/7 free helpline and a website where you can find support, access resources, and if you wish, make a report.

What support can we offer you? ←

Our trained helpline operators and support workers speak different East and Southeast Asian languages. With help from trusted interpreters, we can support you in any language you need.

Our promise →

Your safety and well-being are central to everything we do. Unless there is an exceptional risk to your safety or the safety of others, we will never share anything you tell us with anyone else without your permission.

Do not suffer in silence. Talk to us.
We are #OnYourSide.

☎ Call us for free - 0808 801 0393 💬 Contact us online - onyoursideuk.org

This service has been funded by the Department for Levelling Up, Housing and Communities through the HEROES Welcome Programme. The service is run by a consortium of charity and not-for-profit organisations and operates completely independently of the UK Government. Unless there is exceptional risk to your safety, or the safety of others, no data you share will ever be given to any other agency without your full and informed consent.



On Your Side is a new, UK-wide support and reporting service for anyone in the UK who identifies as **East and Southeast Asian** who has experienced racism or any forms of hate.



- 24/7 support service run by Stop Hate UK
- Trained helpline operators who speak a range of East and South East Asian languages
- Trusted Interpreters
- Case work support
- Prevention

Making a report – Third Party and Statutory



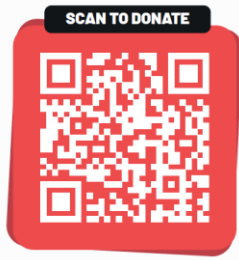
Barriers to reporting



- Not realising the reason for being targeted
- Ashamed or embarrassed (believe they are to blame)
- Not wanting to share personal information
- Not serious enough
- Will not be believed/credible witness
- Believing nothing will change
- Abuse becomes normal
- Cultural issues

- Communication /life skills
- Poor physical or mental health
- Denial
- Fear of things getting worse
- Not knowing how/where to report
- Fear of involvement from professional agencies
- Mistrust and negative past experiences

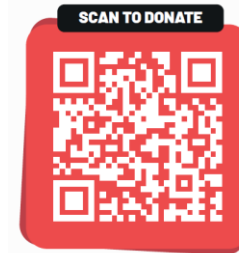
The difference reporting can make



- Support and advice
- Prevent escalation
- Drive change in policy and law
- Identify trends and hotspots
- Increased community safety
- Prevent recurrence
- Action



Follow/Tag us on Social Media



@stophateuk



stophateuk



stop_hate_uk



Stop Hate UK



www.stophateuk.org

STOP HATE UK
STOP HATE. START HERE

Thank you



All information and intellectual property contained within this document is owned by Stop Hate UK.

Stop Hate UK reserves all rights and privileges regarding the use of this information and any unauthorised use or reproduction, such as distributing, copying, modifying, or reprinting, is not permitted without prior permission.

To apply for permission to reproduce or distribute this document contact info@stophateuk.org, stating full details of intentions of usage.

© 2022 Stop Hate UK. All rights reserved