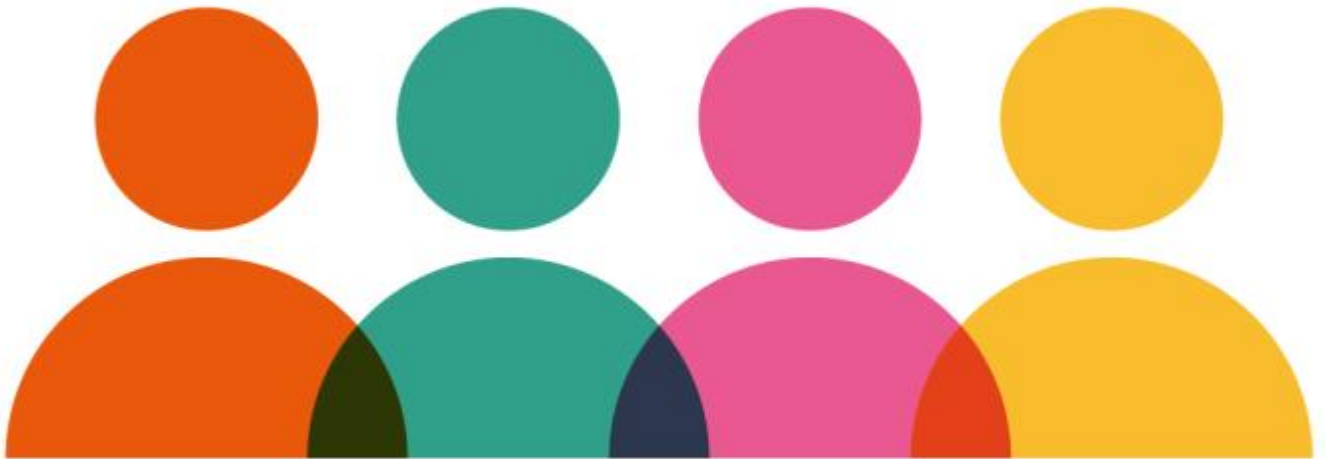


Age Assessments and Age Disputes

Image



Policy and Guidance

This section provides information on policy and guidance on age assessments and age disputes.

- Home Office provides [policy guidance on age assessments](#) (recent version released November 2024). You can also refer to Association of Directors of Children's Service (ADCS) [guidance which informs on how to undertake high quality age assessment](#).
- Home Office sets out [guidance on the procedures to follow when the age of an immigration detainee is disputed](#). (recent version released March 2023)

Resources

You can find different resources on age assessments and age disputes here.

- BASW have written a new best practice guide for social workers undertaking age assessments. [You can download it here.](#)
- ISWS have designed a useful free guide & resource pack for those undertaking age assessments. [You can download it here.](#)
- ADCS provides [age assessment information sharing proforma](#) which is useful for professional conducting age assessment.
- CORAM Children's legal centre provides a [useful factsheet on age assessment.](#)
- Greater Manchester Immigration Aid Unit provides [young people's guide to the age assessment process.](#)
- [Children's Society Refugee Toolkit](#) offers resources that informs the needs, rights and entitlements of young refugees and asylum seekers. Right to Remain also provides a [useful toolkit to explain the stages of a young person's asylum journey.](#)
- Migration Yorkshire provides [a list of available solicitors to support the young people with their asylum claim](#)

Training

We offer a range of training where we discuss age assessments and age disputes. Please check our [Events & Training page](#) for updated training courses. If you would like to commission us to deliver our 'Welcoming & Supporting Young Refugees training' please contact us on: wyr@migrationyorkshire.org.uk

Contact for UASC hub

Your contact for Yorkshire and Humber is:

Delphine Jacobs - UASC Regional Coordinator
wyr@migrationyorkshire.org.uk
[0113 535 0119](tel:01135350119)

Source URL: <https://www.migrationyorkshire.org.uk/age-assessments-and-age-disputes>